



ST NH 690V/800V AC fuse bases

Fuse bases for NH fuse-links. Manufactured with a high quality materials. Silver plated copper contacts. Plastic materials with high temperature resistance and self-extinguishable. All the materials are according to the European Directive RoHS. For mounting on DIN/EN rail or with screw fixing. Single-phase or three-pole type. Connection by screws.

Contacts with double spring in order to obtain an optimum operation. Wide range of accessories that enables IP20 protection index: contact covers, fuse link covers and partition walls. Multi-pole units can be made with connection accessories.

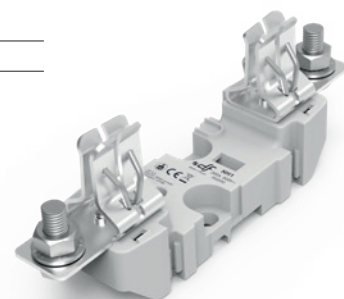
Manufactured according IEC, EN and DIN standards.



U **690V/800V AC**

In **250A**

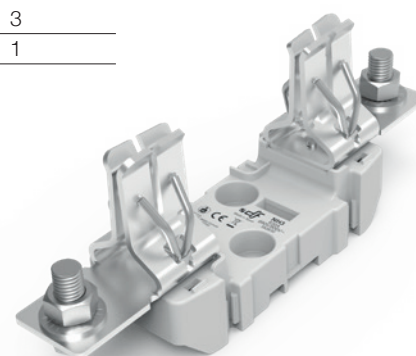
POLES	FIXING	CONNECTION	REFERENCE	PACKING Uni / BOX
SINGLE-POLE	DIN RAIL / SCREW	SCREW	352300	3
THREE-POLE	DIN RAIL / SCREW	SCREW	353300	1



U **690V/800V AC**



In **630A**

SINGLE-POLE	DIN RAIL / SCREW	SCREW	352630	3
THREE-POLE	DIN RAIL / SCREW	SCREW	353630	1

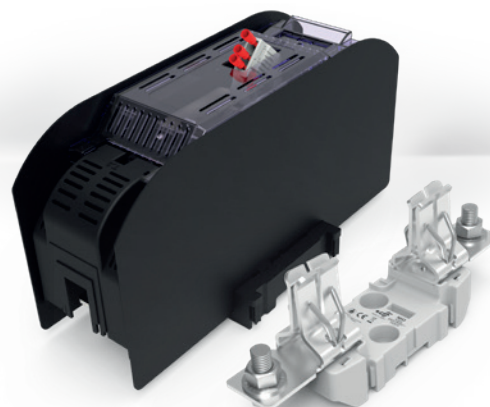
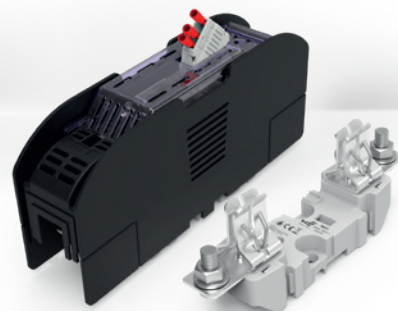
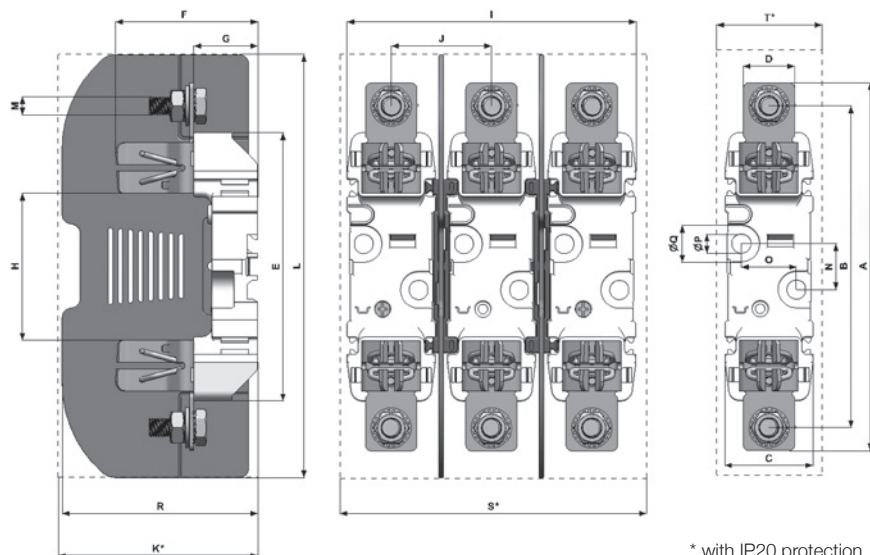




ST NH 690/800V AC fuse bases

RATED VOLTAGE	RATED CURRENT	PROTECTION INDEX
800V AC	250A 	IP00 IP20
	630A 	

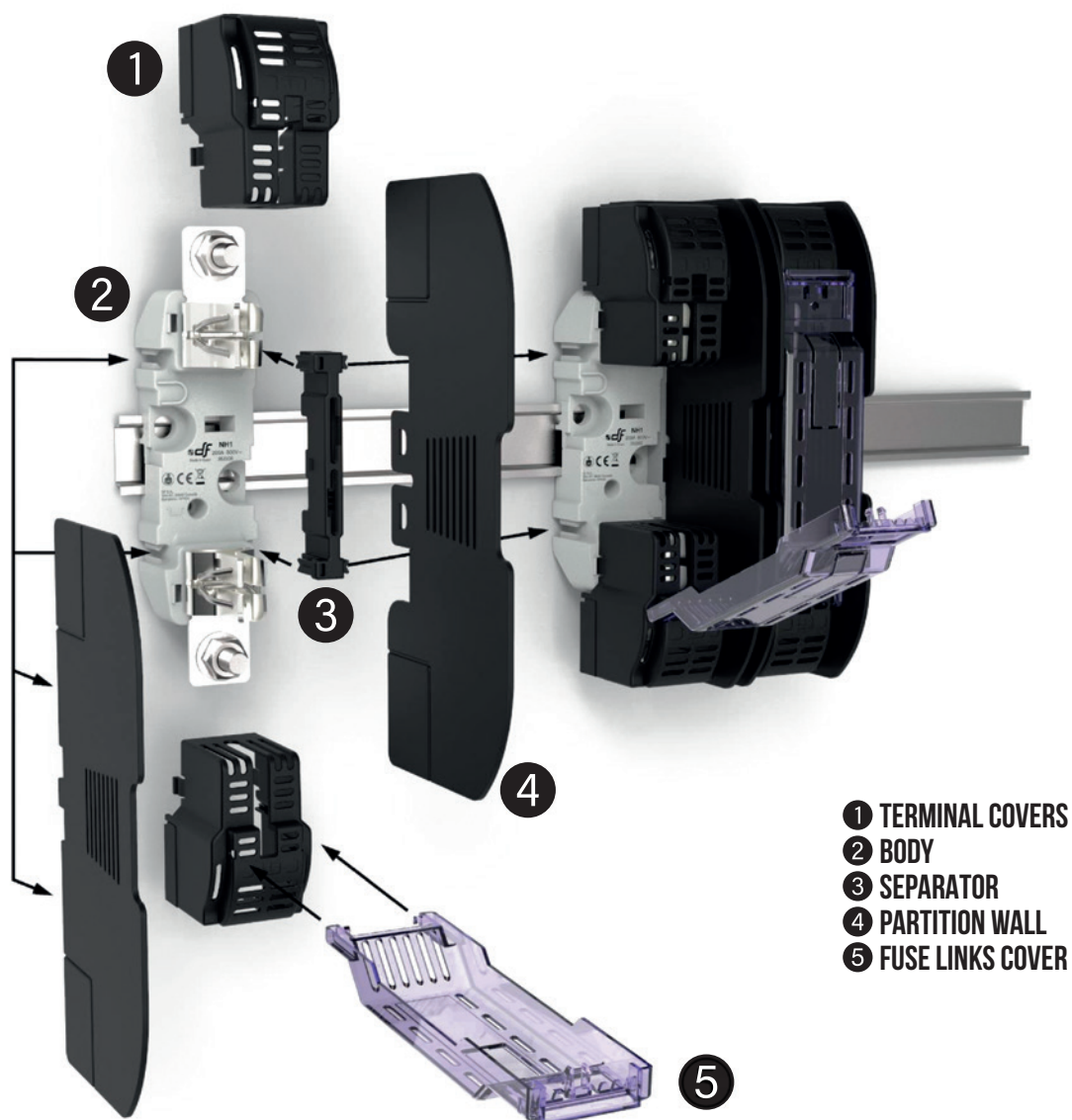
DIMENSIONS



	A	B	C	D	E	F	G	H	I	J	K	L	M	N	O	P	Q	R	S	T
NH1	200	175	48	28	148	77,5	35	80	156,5	54,3	107	230	M10	25	30	10,5	20,5	107	162	54
NH3	240	210	60	38	148	97	35	80	224	82	143	270	M12	25	30	10,5	20,5	143	281	116



ACCESSORIES ASSEMBLY



The fuseholder allows using simultaneously a microswitch for NH fuse links and IP20 protection accessories.

